



Thomas Road. Renovation next to the White Horse, early 1990's
The house with the for sale notice had been a shop, formerly
selling green groceries, and latterly fish and chips. It closed after a fire.





Carlton House, formerly Tenter Hill Lodge
see book p. 98

SE44SW

BRAMHAM CUM OGLETHORPE
LS23

TENTER HILL
(north side)

1/52
30.3.66

Carlton House and
Carlton Cottage

II

House and cottage. Late C18; altered. Magnesian limestone, the house of ashlar and the cottage of coursed squared masonry; stone slate roofs. House gable to road, cottage attached to right-hand side. House 2 storeys, 2 bays, in classical style, with raised quoins, 1st-floor sillband, prominent gable pediment; ground floor has a round-headed doorway with imposts and keystone, panelled door with fanlight, and a 16-pane sashed window to the left; 1st floor has two 12-pane sashed windows; pediment contains a blind oeil-de-boeuf. Cottage, slightly set back, 2 and 3 storeys (on descending slope), 2 bays; 1st bay has a segmental-headed former wagon entrance blocked and altered to make a very large 30-pane sashed window, and above this a 12-pane sash; 2nd bay has a window on each of 3 floors, all altered; between the bays at ground floor is a small inserted window. Addition to the right, not included in the item.





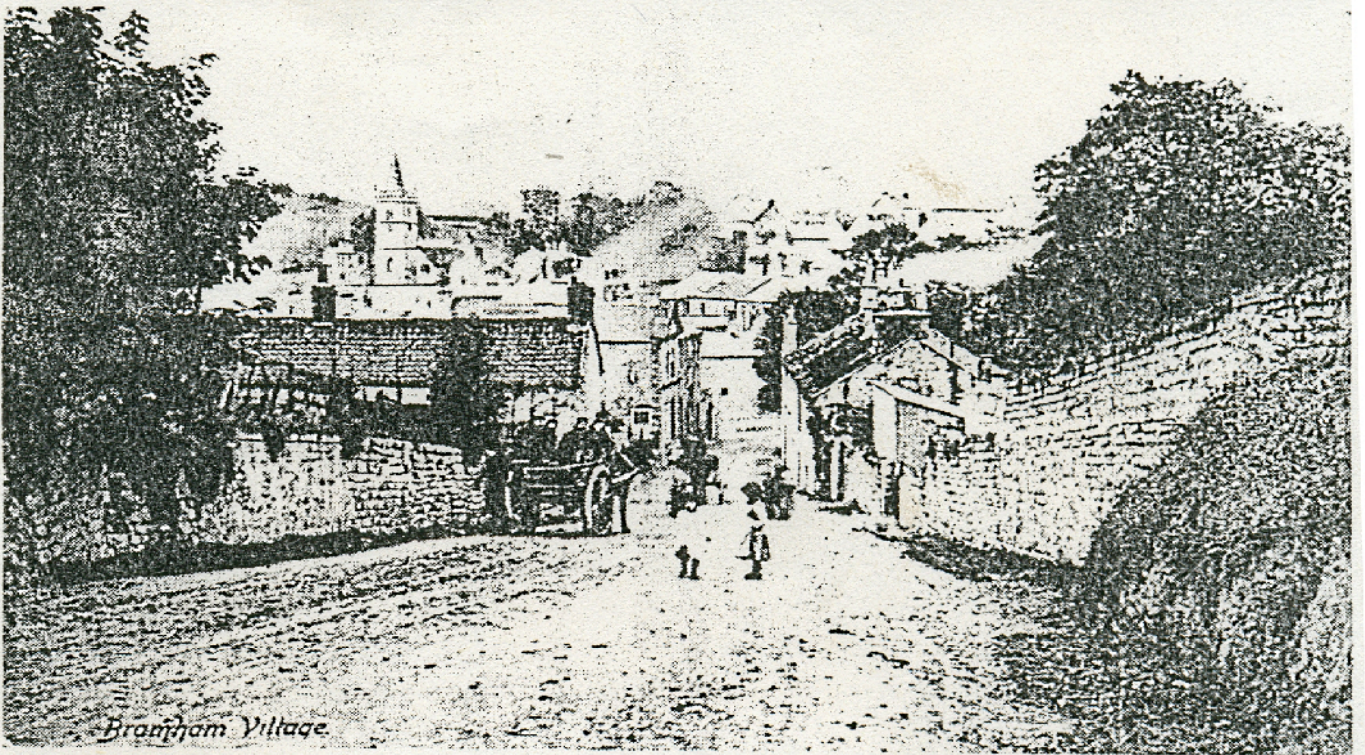
Tenter Hill - the remaining cottage of
the street now seen opposite. See book page 22.



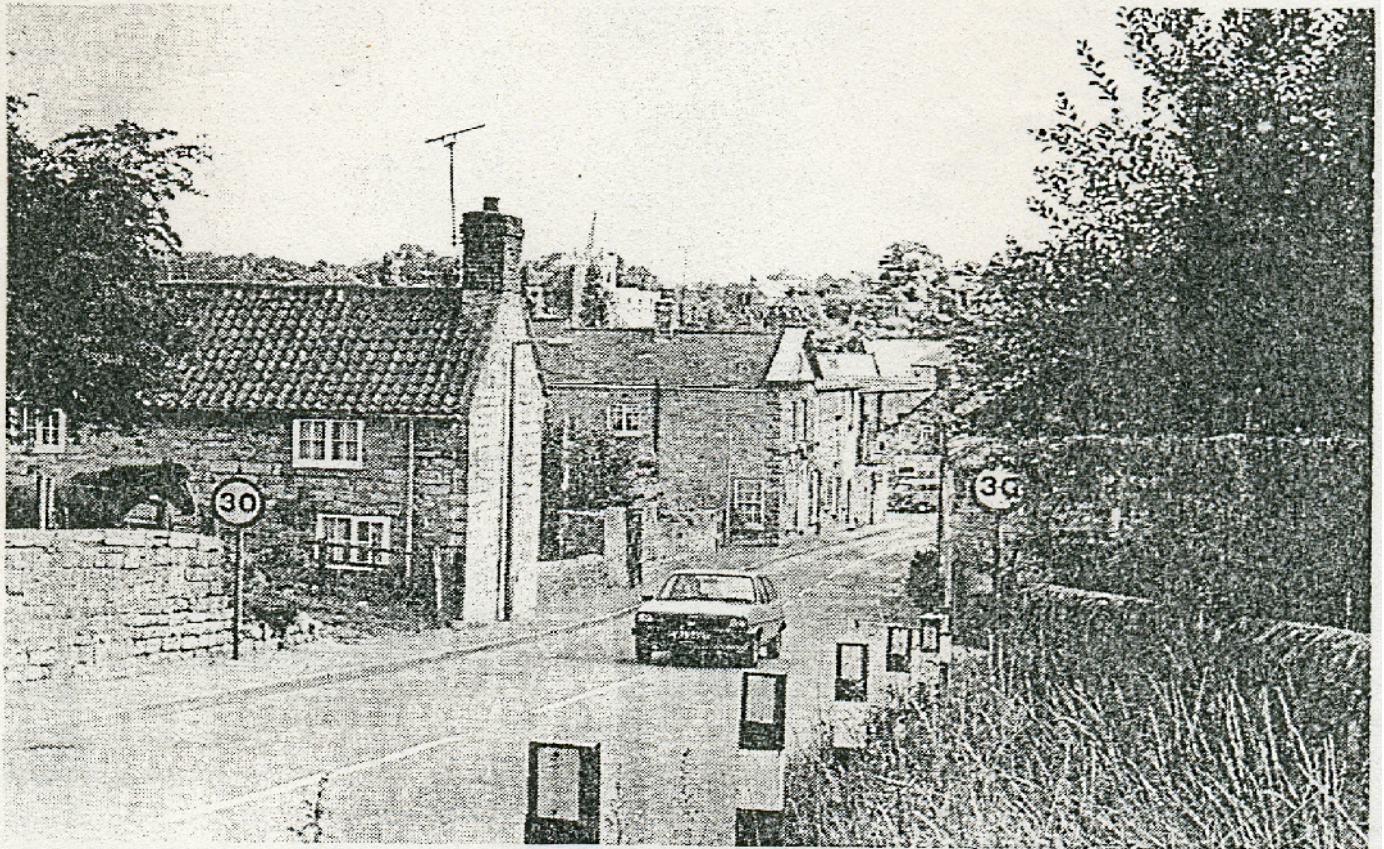
The old
and the new (2000) on Tenter Hill



Down Memory Lane



THEN: A truly rural scene in Tenter Hill, Bramham, in 1913 with the tower of All Saints' Church visible in the distance.



NOW: Television aerials share the skyline with the church tower and Tenter Hill itself has become the route on to the busy A1. (W1217)



Tenter Hill (2000)

Back St., formerly a very tough area, now a quiet spot.





The butcher's shop, suddenly
demolished and replaced in 1994 by
a small cottage. See book page 19.





Tenter Hill - the road to Thorne
(until the 1990's by-pass blocked it)





Tenters Hill (see book pp. 20-2, 55)



№14

BRAMHAM





Tates Hill. The original road went straight up, towards Thames. The first by-pass introduced a large bridge which was filled in, as above, when the second by-pass was built in the early 1990's. At this point, Tates Hill became a cul-de-sac.



Demolition of the 'old' A1 Bridge
before blocking off the Thames Road.